



 ROYAL<sup>®</sup>  
Siding

**However you imagine home,  
we have it covered.**

# The last siding brochure you'll ever need.

---

Choosing the right siding is likely the biggest, and potentially the most confusing, exterior decision out there. But it doesn't have to be. Royal® Building Products is out to make the experience simple and supremely satisfying—with gorgeous, low-maintenance siding that covers a wide range of styles, climates and budgets.

In this brochure, you'll find out why our siding is so curb appealing, highly durable and easy to live with. For clarity, direction and even a little inspiration, just start turning the pages. You'll love where you end up.

On Cover:  
Woodland D45D in Rockslide,  
Royal® Board & Batten in Urban Bronze,  
Royal® Vinyl 3.5 Trim in Wedgewood

Haven® D7 in Heather,  
Portsmouth™ Hand-Split Shake in Marine Blue,  
Royal® Insulated Trim in Granite







# Beauty. Longevity. Low maintenance. Done.

## CURB APPEAL

We have the siding styles, textures and accessories to help you fine tune it, whether your home is a Craftsman, Cape Cod, Colonial or somewhere in between. Our siding with darker shades features innovative Chromatix™ technology color protection to stay rich and true, day after day.

## DURABILITY

Our siding resists color fade and protects your exterior for a very long time, and looks good while doing it. Plus, many of our siding lines are surprisingly green, rivaling cedar in overall sustainability.

## LOW MAINTENANCE

By making our siding virtually impervious to water, you end up with siding that's very easy to take care of and practically maintenance free.

## VALUE

No matter what level of expense is in your comfort zone, we have a siding product that looks great and performs beautifully.

## PEACE OF MIND

Every one of our siding products makes life easier with a great warranty, while contributing to strong resale value.

## Colorscapes® Dark Colors

Redwood	Riverway	Shamrock	Midnight Surf	Granite	Heritage Blue
Ironstone	Cocoa	Wedgewood	Weathered Gray	Marine Blue	Urban Bronze

## Colorscapes® Premium Colors

Cypress	Pebble Clay	Storm	Walnut
Tree Moss	Rockslide	Toasted Almond	Silver Mist

## Colorscapes® Traditional Colors

Vintage Cream	Sand	Brownstone	White	Heather	Wicker
Harvard Slate	Linen	Flagstone	Blue Gray	Sterling	Soft Maple

## Woodland

## Weathered

Black Walnut	Sedona Shadow	Mountain Ash	Rustic Gray	Gray Moss	Cottonwood	Aged Pewter	Stonehedge
--------------	---------------	--------------	-------------	-----------	------------	-------------	------------

Actual siding colors may vary slightly from printed brochure.

# CONQUER ANY CLIMATE.

Estate™ Siding delivers high performance against the elements with hurricane-force wind resistance, Chromatix® technology applied to all Colorscapes® Dark and Premium colors, and nail hems and lock & clip systems designed for a robust installation.

- Robust .044" thick panel
- Partial rollover nailing hem
- Teardrop lock and clip system
- Designed to withstand hurricane-force winds up to 180 mph
- Premium and Dark Colorscapes® shades feature Chromatix® technology color protection

# DEEPEN DESIGN WITH COLOR.

Color is crucial to how your siding presents itself. So we pay a lot of attention to what's trending and what works. Choosing your own colors can be fun, but a bit overwhelming. So we created a color combination tool to help. Get ideas and tips at [royalbuildingproducts.com/color-style/royal-color-combinations](http://royalbuildingproducts.com/color-style/royal-color-combinations).

We develop our wide range of colors to fully express design when they're fresh, and years down the road, engineering our siding pigments to deliver vibrant curb appeal, resist fade and fend off elements day after day.

- Our proprietary Chromatix® technology color protection effortlessly maintains the look you create in a challenging outdoor environment.
- Infrared-reflecting pigments reduce heat buildup
- UV formulation with mineral-based pigments keep siding colors from fading



**chromatix**<sup>®</sup>  
PRESERVES YOUR COLOR.  
PROTECTS YOUR INVESTMENT.

## Play with more than color.

HomePlay™  
BY ROYAL

To mix and match everything from siding to trim treatments on a variety of home styles (including your own), use our online design tool at [HomePlayByRoyal.com](http://HomePlayByRoyal.com).

L I V E ^ A B O D E ^

For design inspiration and year-round trending ideas and tips, explore our online design magazine at [LiveAbode.com](http://LiveAbode.com).



Haven® D7 in Sterling,  
 Portsmouth™ D7 Cedar Shingles in Wedgewood,  
 Royal® Vinyl Trim in White

haven®  
 INSULATED SIDING

**CURB APPEAL TIP:** Neutral colors enhance the presence of a smaller home. Bolder, darker colors make a larger home feel more cozy.

# Thermal efficiency never looked so good.

Looking to wrap your home in something gorgeous, energy-efficient and low maintenance? Royal Haven® Insulated Siding has the rustically curb-appealing look of authentic woodgrain and the architecturally correct profiles that provide a seamless, flat fit.

Haven's EPS foam helps it insulate better than fiber cement, wood, engineered wood or brick. So it keeps your home quiet and conquers harsh climates. And its composite structure makes it super durable, which keeps you from spending precious time painting or thinking about siding that warps, buckles or sags.

- **1 1/8" board-like composite**
- **Helps straighten walls**
- **Chromatix™ technology color protection featured in Premium and Dark Colorsapes® shades**
- **Reduces noise by up to 45%**
- **Helps save money on heating and cooling your home**
- **Industry-leading Double Lifetime Warranty**



#### COLORSCAPES® DARK COLORS:

- Redwood
- Granite
- Marine Blue
- Shamrock
- Ironstone
- Urban Bronze
- Midnight Surf

#### COLORSCAPES® PREMIUM COLORS:

- Cypress
- Pebble Clay
- Storm

#### COLORSCAPES® TRADITIONAL COLORS:

- Vintage Cream
- White
- Harvard Slate
- Sand
- Heather
- Linen
- Brownstone
- Wicker
- Sterling

Ironstone, Marine Blue, and Urban Bronze available in Board & Batten only.

Woodland D45 in Harvard Slate and Ironstone,  
 Portsmouth™ D7 Cedar Shingles in Weathered Gray,  
 Royal® Vinyl Trim in White

# Woodland

**CURB APPEAL TIP:** Use darker shades in windows and trim for a flash of personality.

# Genuine curb appeal, in every color and facet.

Woodland Siding is design versatility and no-worry maintenance wrapped up in an irresistible package. It has the deep shadow lines, longer-length board options and color choices to help you redefine your home exterior. Innovative features like its double nail hem give it the strength and durability to stand up to wear, weather and winds up to 200 mph. Plus, it redefines easy upkeep, saving you tons of maintenance time over the life of your home.

- **Thickness = .046"**
- **Never needs painting**
- **Chromatix™ technology color protection featured in Premium and Dark Colorsapes® shades**
- **Manufactured from recyclable materials**
- **Industry-leading Double Lifetime Warranty**
- **Offered in 12', 16' and 25' lengths for a more seamless appearance**



#### COLORSCAPES® DARK COLORS:

- |                 |                 |                  |
|-----------------|-----------------|------------------|
| ● Redwood       | ● Granite       | ● Wedgewood      |
| ● Riverway      | ● Heritage Blue | ● Weathered Gray |
| ● Shamrock      | ● Ironstone     | ● Marine Blue    |
| ● Midnight Surf | ● Cocoa         | ● Urban Bronze   |

#### COLORSCAPES® PREMIUM COLORS:

- |               |               |                  |
|---------------|---------------|------------------|
| ● Cypress     | ● Walnut      | ● Rockslide      |
| ● Pebble Clay | ● Tree Moss   | ● Toasted Almond |
| ● Storm       | ● Silver Mist |                  |

#### COLORSCAPES® TRADITIONAL COLORS:

- |                 |                 |              |
|-----------------|-----------------|--------------|
| ● Vintage Cream | ● Heather       | ● Flagstone  |
| ● Sand          | ● Wicker        | ● Blue Gray  |
| ● Brownstone    | ● Harvard Slate | ● Sterling   |
| ● White         | ● Linen         | ● Soft Maple |

Royal® Board & Batten in Heritage Blue,  
 Portsmouth™ D7 Cedar Shingles in Flagstone,  
 Zuri® Premium Decking in Chestnut

# Board & Batten

**CURB APPEAL TIP:** Board & Batten works well as a gable accent or door flank. Deeper shades embolden neutral-colored clapboard.

# A contemporary statement with homespun character.

In a starring role or as a complementary accompaniment, our Board & Batten Siding makes the most of its vertical profile to add dimension and character to any home style. Change-of-pace magnetism is even better when it lasts. Board & Batten is reinforced by rugged weather resistance, long-term durability and year after year of low maintenance.

- **Thickness = .046"; .050" in dark colors**
- **Trending vertical board design with classic, seamless appearance**
- **Never needs painting**
- **Chromatix™ technology color protection featured in Premium and Dark Colorsapes® shades**
- **Industry-leading Double Lifetime Warranty**

## Board & Batten



### COLORSCAPES® DARK COLORS:

- |               |               |                |
|---------------|---------------|----------------|
| Redwood       | Granite       | Wedgewood      |
| Riverway      | Heritage Blue | Weathered Gray |
| Shamrock      | Ironstone     | Marine Blue    |
| Midnight Surf | Cocoa         | Urban Bronze   |

### COLORSCAPES® PREMIUM COLORS:

- |             |             |                |
|-------------|-------------|----------------|
| Cypress     | Walnut      | Rockslide      |
| Pebble Clay | Tree Moss   | Toasted Almond |
| Storm       | Silver Mist |                |

### COLORSCAPES® TRADITIONAL COLORS:

- |               |               |            |
|---------------|---------------|------------|
| Vintage Cream | Heather       | Flagstone  |
| Sand          | Wicker        | Blue Gray  |
| Brownstone    | Harvard Slate | Sterling   |
| White         | Linen         | Soft Maple |



Estate™ D5D in Granite,  
 Portsmouth™ D7 Cedar Shingles in Yellow Birch,  
 Royal® Vinyl Trim in White

**Estate™**

**CURB APPEAL TIP:** Choose the siding width and pattern that best matches the size and style of your home.

# Timeless presence and effortless endurance from day one.

Estate™ Siding is a beautiful combination of presence, light, shadow, texture and UV-resistant color—differentiating itself with our widest assortment of dark shades and uniquely appealing styles, including Colonial Beaded. It's a true long-term investment that raises your home's profile, bolsters its resistance to all kinds of wear and weather, while virtually eliminating upkeep over the long haul.

- **Thickness = .044"**
- **Our widest collection of dark shades**
- **Never needs painting**
- **Chromatix™ technology color protection featured in Premium and Dark Colorsapes® shades**
- **Industry-leading Double Lifetime Warranty**



#### COLORSCAPES® DARK COLORS:

- |               |               |                |
|---------------|---------------|----------------|
| Redwood       | Granite       | Wedgewood      |
| Riverway      | Heritage Blue | Weathered Gray |
| Shamrock      | Ironstone     | Marine Blue    |
| Midnight Surf | Cocoa         | Urban Bronze   |

#### COLORSCAPES® PREMIUM COLORS:

- |             |             |                |
|-------------|-------------|----------------|
| Cypress     | Walnut      | Rockslide      |
| Pebble Clay | Tree Moss   | Toasted Almond |
| Storm       | Silver Mist |                |

#### COLORSCAPES® TRADITIONAL COLORS:

- |               |               |            |
|---------------|---------------|------------|
| Vintage Cream | Heather       | Flagstone  |
| Sand          | Wicker        | Blue Gray  |
| Brownstone    | Harvard Slate | Sterling   |
| White         | Linen         | Soft Maple |

Colonial Beaded is not available in Colorsapes® Dark Colors.

Residential D5 in Brownstone,  
 Portsmouth D7 Cedar Shingles in Tree Moss,  
 Royal® Vinyl Trim in Linen

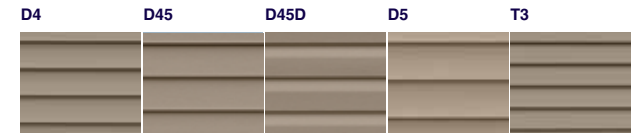
# Residential

**CURB APPEAL TIP:** Dare to mix different siding styles and textures. It adds depth and visual interest.

# It makes natural wood presence and low upkeep look easy.

Residential Siding is a beautiful combination of curb-appealing woodgrain texture, UV-resistant color and durability. It's designed to resist wear and tear, and stand up to wind, rain and snow, year after year. Plus, it's available in some of the darkest colors in this price range, and styles that include a triple 3" that displays a classic wood look.

- **Thickness = .042"**
- **Wide selection of popular colors**
- **Never needs painting**
- **Chromatix™ technology color protection featured in Premium Colorsapes® shades**
- **Industry-leading Double Lifetime Warranty**



**COLORSCAPES® PREMIUM COLORS:**

- |             |             |                |
|-------------|-------------|----------------|
| Cypress     | Walnut      | Rockslide      |
| Pebble Clay | Tree Moss   | Toasted Almond |
| Storm       | Silver Mist |                |

**COLORSCAPES® TRADITIONAL COLORS:**

- |               |               |            |
|---------------|---------------|------------|
| Vintage Cream | Heather       | Flagstone  |
| Sand          | Wicker        | Blue Gray  |
| Brownstone    | Harvard Slate | Sterling   |
| White         | Linen         | Soft Maple |

D5 and T3 are not available in Storm, Walnut, Tree Moss, Rockslide or Toasted Almond

Royal® Crest D4D in Pebble Clay (top) and in Harvard Slate (bottom),  
 Royal® Vinyl Trim in Linen,  
 Royal® Louvered Shutter Panels in Pine

# Royal® Crest

**CURB APPEAL TIP:** Add trim with light ornamentation for a subtle finish. Go bolder with contrasting shutters and a wider trim style.

## Reflect your taste. Preserve your budget.

Royal® Crest Siding takes the gorgeous aura of real woodgrain, adds durability and subtracts maintenance hassle. It's designed to be the perfect foil for wear, tear, wind, rain and snow, year after year. While this is our most economical siding, it comes with a premium, partial roll-over hem, not always found in other siding brands. It's available in a wide range of popular colors and profiles, stands up to harsh weather and doesn't flake, chip, rot or sag.

- **Thickness = .040"**
- **Our broadest array of profile choices**
- **Never needs painting**
- **Manufactured from recyclable materials**
- **Industry-leading Double Lifetime Warranty**



**COLORSCAPES® PREMIUM COLORS:**

- Cypress
- Pebble Clay

**COLORSCAPES® TRADITIONAL COLORS:**

- Vintage Cream
- Sand
- Brownstone
- White
- Heather
- Wicker
- Harvard Slate
- Linen
- Flagstone
- Blue Gray
- Sterling
- Soft Maple



Portsmouth™ D7 and Hand-Split Shake in Redwood,  
Estate™ D5 in Wicker,  
Royal® Vinyl Trim in White

**PORTSMOUTH™**  
SHAKE & SHINGLES

# Engineered with deep texture and low maintenance.

Color, texture, depth, emotion, form and function all come together in Portsmouth™ Shake & Shingles Siding. Richly realized in warm Cedar, rustic Hand-Split Shake and charming Half Round accents.

Elegant, quaint, heart-tugging, down-to-earth: our Portsmouth Shake & Shingles Siding is available in every variety of curb appeal. The best part: our dramatic color and style options carry near-zero maintenance drama. Portsmouth doesn't warp, buckle or sag, and comes with a Lifetime Limited Warranty.

- **Deep, dramatic, realistic natural cedar texture**
- **Never needs painting**
- **UV-stabilized polymers protect against fading**
- **Lifetime Limited Warranty**

**CURB APPEAL TIP:** Hand-Split Shake lends rustic ambience to Craftsmans. Half Rounds create a Victorian feel.



Portsmouth™ D7 Shingles in Wedgewood



Portsmouth™ S7 8' Shingles in Blue Gray



Portsmouth™ D5 Shingles in Toasted Almond



Portsmouth™ Half Rounds in Pebble Clay



Portsmouth™ S9 Hand-Split Shake in Clay

**COLORSCAPES® DARK COLORS:**

- Redwood
- Granite
- Wedgewood
- Riverway
- Heritage Blue
- Weathered Gray
- Shamrock
- Ironstone
- Marine Blue
- Midnight Surf
- Cocoa
- Urban Bronze

**COLORSCAPES® PREMIUM COLORS:**

- Cypress
- Tree Moss
- Pebble Clay
- Rockslide
- Storm
- Toasted Almond
- Walnut
- Silver Mist

**COLORSCAPES® TRADITIONAL COLORS:**

- Vintage Cream
- Heather
- Flagstone
- Sand
- Wicker
- Blue Gray
- Brownstone
- Harvard Slate
- Sterling
- White
- Linen
- Soft Maple

**WOODLAND**

- Black Walnut
- Sedona Shadow
- Mountain Ash
- Rustic Gray

**WEATHERED**

- Grey Moss
- Cottonwood
- Aged Pewter
- Stonehedge

D7 and S7 available in all colors.

D5 only available in White, Sterling, Sand, Harvard Slate, Pebble Clay, Cypress, Storm and Toasted Almond.

Half Rounds only available in White, Linen, Sand and Pebble Clay.

**No matter what your style,  
we have a siding that will feel right at home.**



Portsmouth™ D7 Cedar Shingles in Heritage Blue,  
Royal® Vinyl Trim in White,  
Zuri® Premium Decking in Weathered Gray



# Our best siding: enduring character, beauty and strength.

From seamless beauty to low maintenance, Celect® Cellular Composite Siding is the culmination of a wealth of innovation—engineered to project neighborhood-defining curb appeal for a very long time.

Celect is inspired by the distinctive presence of wood yet possesses none of wood's maintenance demands. So you get the look, touch and timelessness of real wood without its inconveniences and expenses.

Forget about painting, repainting, caulking, re-caulking and the delaminating that fiber cement is famous for. Celect's awesome, virtually maintenance-free looks never quit.

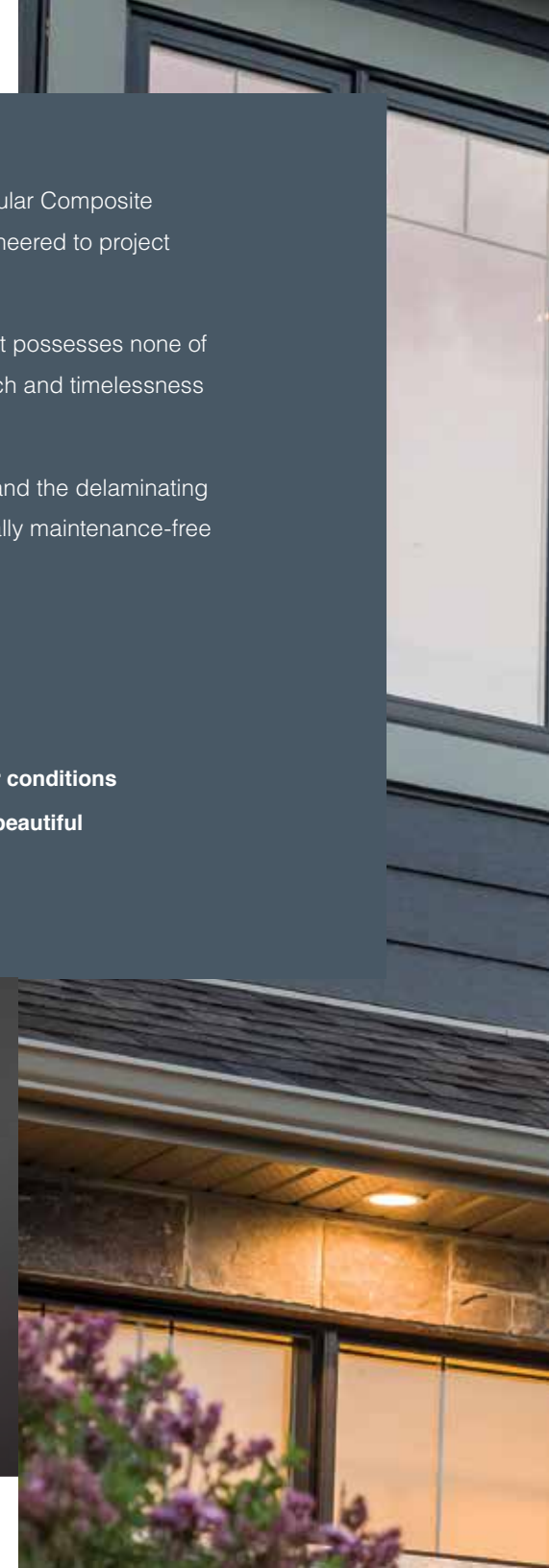
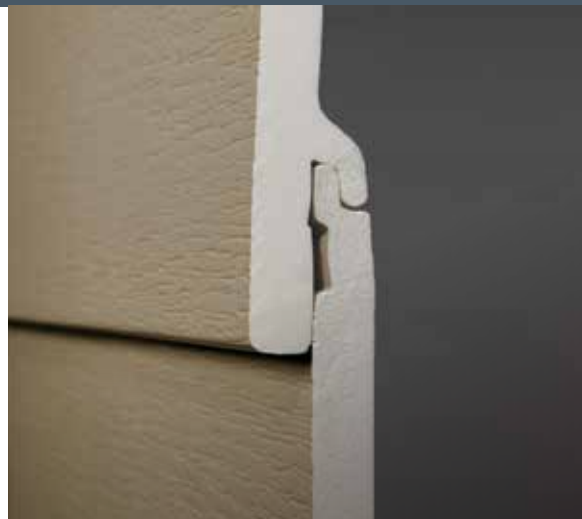
#### Features include:

- **3/8" solid board**
- **Virtually seamless look**
- **Stands up to impact even under the harshest weather conditions**
- **Fade-resistant Kynar Aquatec® coating keeps colors beautiful**
- **Backed by a 25-year color protection warranty**

#### It performs as flawlessly as it looks.

Celect's patented interlocking joints\* keep moisture out and almost completely eliminate seams, which does away with gaps and wavy lines and keeps boards straight and true. Plus, its gravity lock design eliminates warping, buckling and shifting while making it incredibly wind resistant.

\*Patent No: US 8,402,707 B2 (2013)







Celect® 7" Clapboard in Wrought Iron,  
Celect® Trim in River Rock

## A full range of shapes and finishes unaffected by weather and time.



### 7" Clapboard

Beautiful, dimensional evidence of Celect's seamless curb appeal, weather defiance and maintenance freedom.



### 8" and 11" Board & Batten

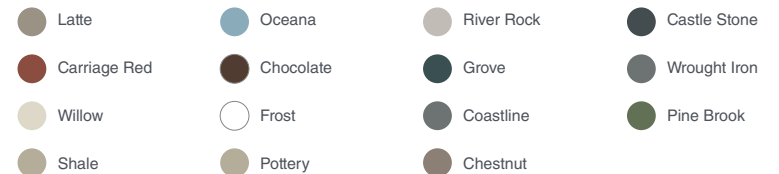
It looks uniquely stunning as a gable accent on historically themed French Country homes, cottage-style homes and farmhouses.



### 7" Shake

Drape your whole exterior in its authentically rustic depth and emotion. Or use it as a powerful accent to tie together other aspects of your exterior.

### CELECT'S GORGEOUS COLORS ARE VERSATILE AND FADE-DEFYING:



Play with color, style and design at:  
[HomePlayPrime.com](http://HomePlayPrime.com)

Celect features a full line of cellular composite accessories.

HomePlay™ Prime



# BOUNDLESS™

Where some see boundaries, Westlake Royal Building Products™ sees opportunities to drive innovation, elevate design and deliver solutions that redefine the industry. Our comprehensive selection of products, materials and widely expressive color palettes and textures meet any home demand—inside and out, East Coast to West. Giving everyone the tools and technology to transform spaces into anything they want. This is our mission. And it's Boundless™.



SIDING & ACCESSORIES

TRIM & MOULDINGS

ROOFING

STONE

WINDOWS

OUTDOOR LIVING

